

Lumin^X

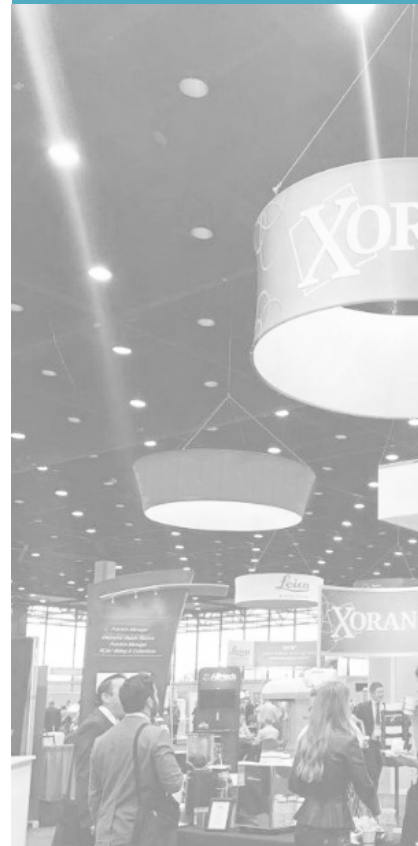
Suite of DR Products





Xoran provides unsurpassed, white-glove customer service and high quality, reliable products that are user- and patient-friendly

Xoran is the pioneer and US medical market leader in point-of-care CT since 2001, and leverages its X-ray expertise in the LuminX series of digital radiography systems





LuminXTM

Suite of DR Products

LuminX Overhead & Overhead Robotic	4-5
LuminX U-Arm Auto	6-7
LuminX Straight Arm	8-9
LuminX FMTS	10-11
LuminX DR Retrofit & Software	12-13
Xoran360	14-15

OVERHEAD DIGITAL RADIOGRAPHY

The LuminX ceiling-suspended DR suite is available with fully motorized Auto-Positioning Tracking and Synchronization (LuminX Overhead Robotic) or lightweight manual positioning (LuminX Overhead)


This modular design offers limitless possibilities





LuminXTM

overhead robotic



- Fast and Quiet Auto-Positioning
- Auto-tracking and Synchronization
- Ergonomic Tube Controls
- Tube-mounted Touchscreen
- Ambient and Signal lighting
- Motorized or manual tilting wall stand
- Smart Stitching Option
- Ultrasonic Collision Sensors



LuminXTM

overhead

- Lightweight Manual Positioning
- Rotational Detector Bucky
- Motorized Vertical column
- Tube-mounted Touchscreen
- Smart Assist Manual Stitching Option



LuminXTM

twin leg table

- New Modern Design
- Bluetooth foot controls
- Extended vertical travel
- Extended detector travel
- Patient load 661 lbs





PRECISE AUTOMATIC POSITIONING

The LuminX U-Arm is the obvious choice for ultimate workflow

Customizable automatic positioning via remote control or Bluetooth® foot pedal quickly drives the system into any position with zero effort

The Tube-mounted Touchscreen brings the LuminX workstation patient-side for increased efficiency

Image acquisition has never been easier



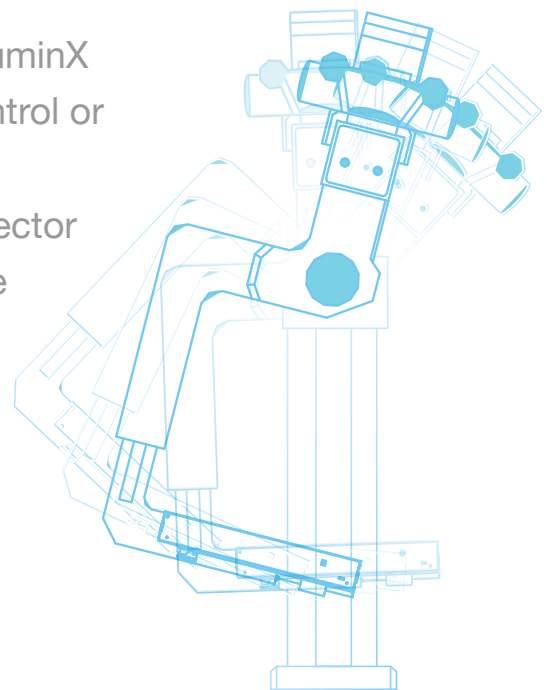
Highly Configurable

Multiple detector options
50, 65, or 80 kW generator options
300, 400, or 600 kHu X-ray tube options
Customizable Auto-Positioning
Auto-procedure selection
Smart Stitching Option
Mobile Patient Table



Automatic Features

Auto-Positioning control from the LuminX workstation, via wireless remote control or Bluetooth® footswitch
High resolution 43x43 flat panel detector
Tube-mounted Touchscreen console
Small footprint
Fast and quiet movements
Motorized Variable SID 100-180 cm
Independent motorized detector tilt



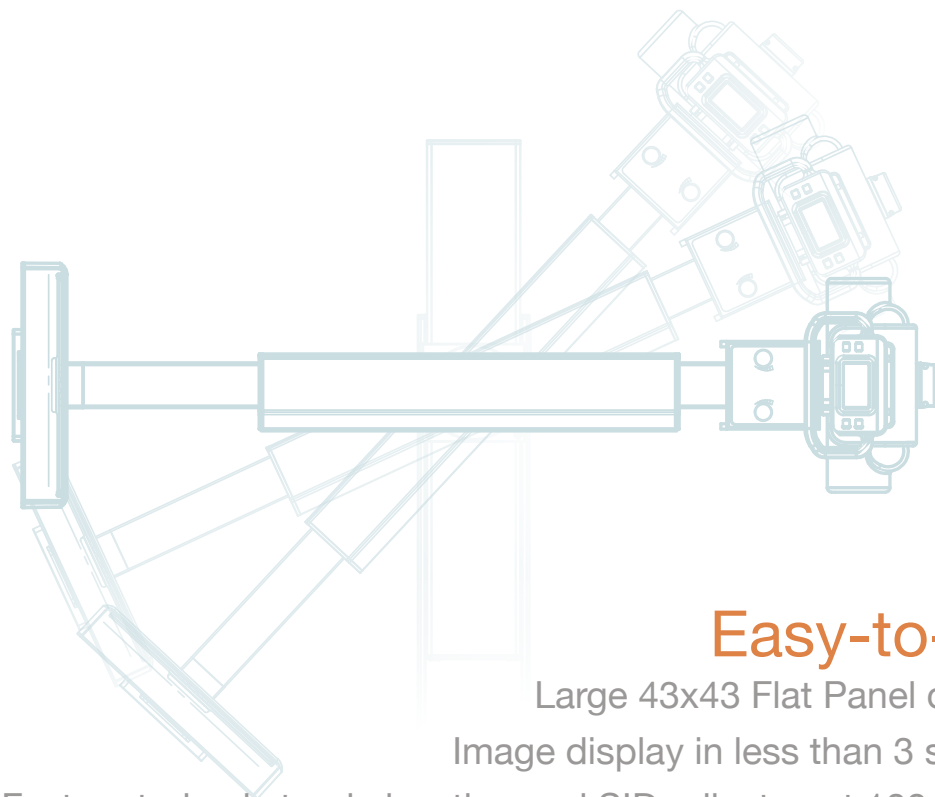


ULTIMATE IMAGING PERFORMANCE IN A COMPACT DESIGN

This semi-automated
DR system can be quickly
and effortlessly positioned
for any general radiography
exam

The exceptionally tiny
footprint allows installation in
the smallest X-ray rooms





Easy-to-Use

Large 43x43 Flat Panel detector

Image display in less than 3 seconds

Fast motorized stand elevation and SID adjustment 100-180 cm

Easy manual tube and detector rotation

Especially low central beam-to-floor distance

Reliable low maintenance design

Smart Assist Stitching Option available



FLEXIBLE AND AFFORDABLE

The LuminX FMTS is a highly configurable floor-mounted DR system

It is available with a choice of fixed or mobile patient tables, motorized or manual system positioning, and single or multiple detectors of various sizes

The LuminX FMTS is an excellent choice for rooms without sufficient ceiling support or room height





User-Friendly Features

Tube-side touchscreen console for generator control,
positioning, and procedure selection

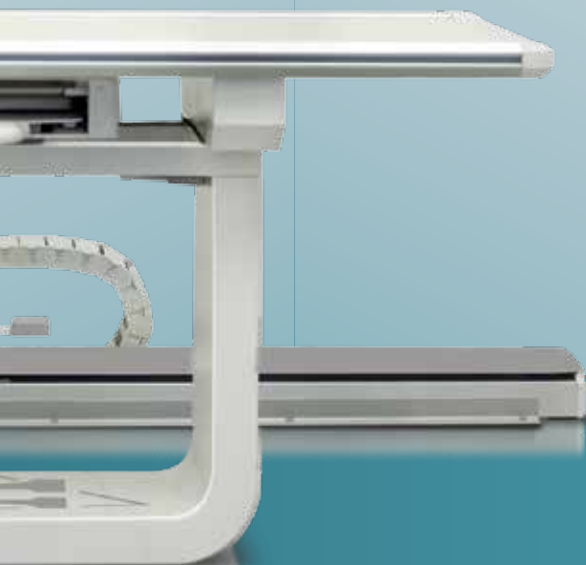
Lightweight manual longitudinal tube travel

Column rotation for cross table exams

Smart Assist Image Stitching Option

Optional motorized elevation of tube column
and wall stand with auto-tracking

Optional motorized table bucky with auto-tracking





Affordable Analog-to-Digital Upgrade

Extend the life of your existing Analog X-ray room or Mobile system with the most flexible upgrade available

Compatible with multiple detector types and sizes, the LuminX DR Retrofit is budget-friendly and designed for flexibility

Multiple configurations

PC Workstation or Mobile tablet

AED Mode or full generator integration

Multi Detector compatibility

Wireless or wired image transfer to PACS

Detector sharing between multiple devices





Fast, Simple, Universal

The LuminX imaging software platform is standard
on all LuminX products

The intuitive workflow guides the technologist
from patient registration to completed study
in just a few quick steps

Outstanding images at very low radiation dose
come easily with LuminX

Software Features

Intuitive space-saving desktop workstation

Image display in less than 3 seconds

Automated procedure selection

DICOM MWL, print, store, export to CD/DVD/USB

MPPS-Modality Performed Procedure Step

REM-Radiation Exposure Monitoring

Easy View Exposure Index/Deviation Index

Automated Reject analysis and QA reporting

Auto-store and configurable auto-delete

Configurable image orientation display

Customizable auto-shutter

Motion control for LuminX Auto-Positioning Systems





WEB-BASED WORKFLOW SOFTWARE

Xoran360 is a diagnostic radiology workflow software with scalable deployment and flexible license options

Xoran360

Xoran360 is a department-wide diagnostic workflow solution providing image and data archiving, search, access, and display

Enter patients onto the system, create and schedule exams on the devices, search for patients and exams, create interactive exam time-plans, see the status of diagnostic procedures, and access and export diagnostic results

Xoran360 PACS

Archive patient, exam, and image database through DICOM



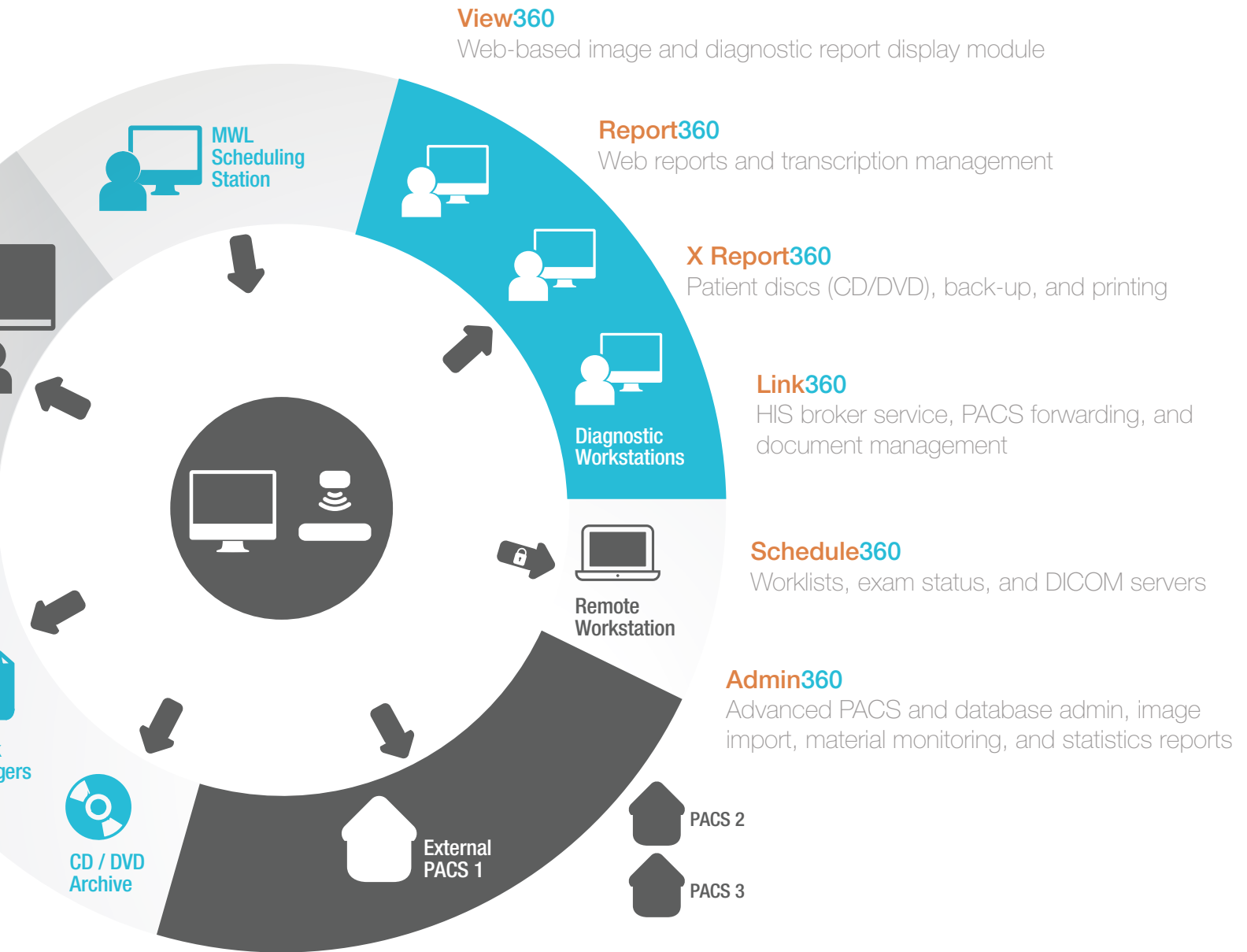
Consultation



PostScript
Printer



Network
Dry Image





xorantech.com