



## space

Dimensions	32 W x 47 L x 60 H in
Weight	472 lbs
Effective Bore Size	25 in diameter
Gantry Rotation	360 degrees

## power

Line Voltage	~120V
Line Frequency	50-60 Hz
Line Current	5 A standby
Peak Current	20 A max

## components

Focal Spot Size	0.6 mm
kVp mA Range	120 - 140 kVp
mA Range	10 - 15 mA
Panel	Dynamic
Pixel Pitch	194 $\mu$ m
Frame Rates	10 - 30 fps



S  
P  
E  
C  
I  
F  
I  
C  
A  
T  
I  
O  
N  
S



800.709.6726 / xorantech.com

## acquisition protocols

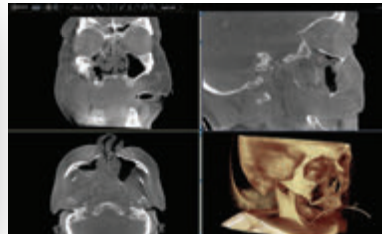
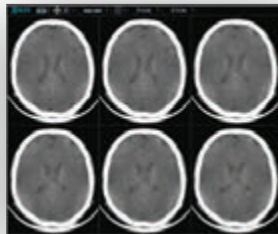
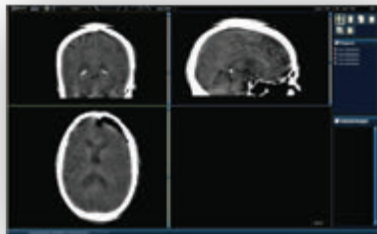
	Frames	Exposure	Effective Radiation Dose
Bone (Full Dose)	600	20s	0.233 mSv
Brain (Full Dose)	600	45s	1.070 mSv
Brain (Medium Dose)	520	39s	0.927 mSv

### *Pediatric*

Bone (Low Dose)	300	20s	0.064 mSv
Brain (Low Dose)	400	30s	0.713 mSv

## reconstruction protocols

	Field-of-View	Resolution
Bone (Full Dose)	22 cm axial	0.3 mm voxels
Brain (Full Dose)	22 cm axial	0.6 mm voxels
Brain (Medium Dose)	22 cm axial	0.6 mm voxels
Brain (Low Dose)	22 cm axial	0.8 mm voxels
Region-of-Interest (ROI)	User-defined	≥ 70 microns



## brain scanning with hard and soft tissue imaging

displayed on the built-in monitor



© M.Dach Uni Ulm HNO

## turns on a dime

< 4' footprint with zero-degree turning, maneuvers tight spaces with easy storage

