

# MiniCAT<sup>2D</sup>

*the solution you've been waiting for*

MiniCAT 2D is a fixed radiographic imaging system for high-resolution, bone-window imaging of the head.

## space

System Dimensions	40 L x 36 W x 67 H in 101.6 L x 91.5 W x 170.1 H cm
Minimum Room Size	9 L x 6 W x 8 H ft 2.7 L x 2 W x 2.4 H m
Weight	450 lbs 204.1 kg

## power

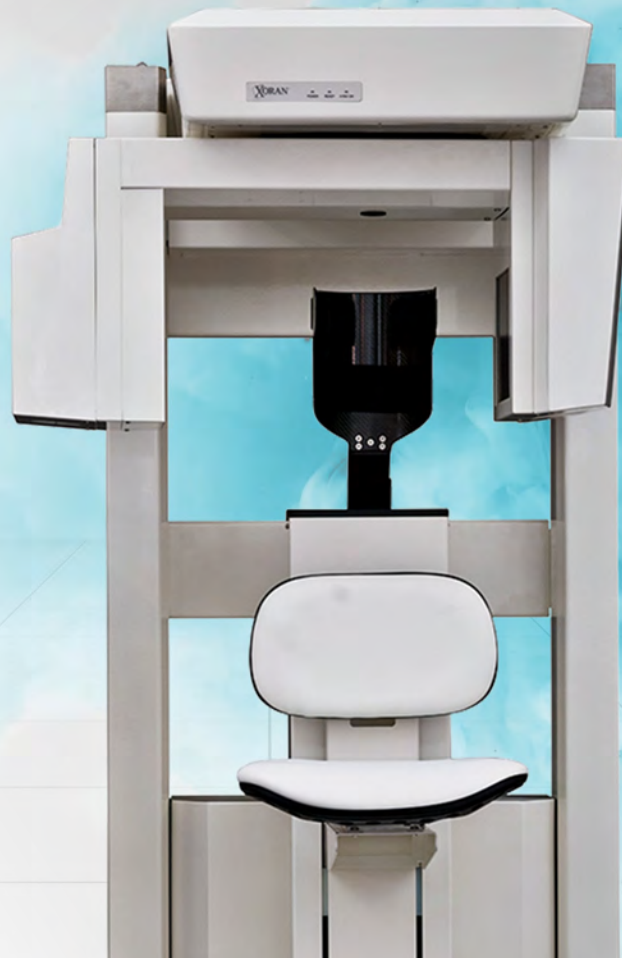
Line Voltage	~115 V ~230 V
Line Frequency	50-60 Hz
Line Current	5 A Standby / 2.5 A standby
Main Circuit Breaker	10 A Max / 5 A Max

## protocols

- Sinus 20s (600 frames)
- Sinus 15s (450 frames)
- Temporal Bone 20s (600 frames)
- Temporal Bone 30s (600 frames)

### *Pediatric*

- Sinus 10s (300 frames)
- Sinus 10s (150 frames)



2D  
S  
P  
E  
C  
I  
F  
I  
C  
A  
T  
I  
O  
N  
S



800.709.6726 / xorantech.com

# MiniCAT<sup>2D</sup>

## RADIATION DOSE COMPARISON

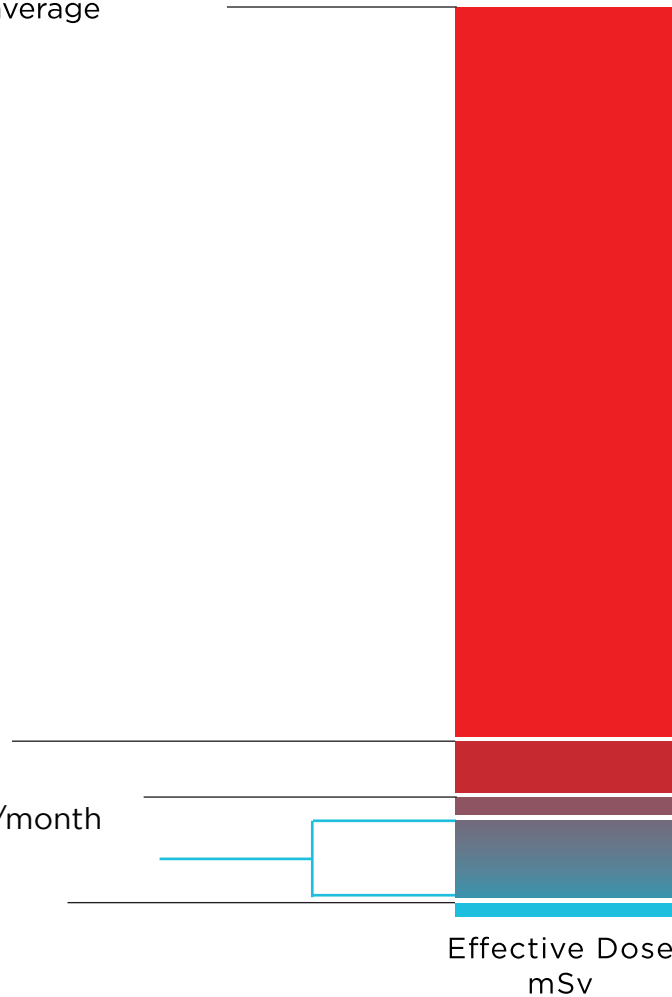
**Conventional head CT** 2.0 mSv average

**Mammography** 0.4 mSv

**Naturally occurring background radiation** 0.26 mSv/month

**MiniCAT 2D** 0.04 mSv - 0.17 mSv

**Single chest x-ray** 0.02 mSv



Sources at [xorantech.com/RadiationDose](http://xorantech.com/RadiationDose)