

# VetCAT<sup>IQ</sup>

## space

Dimensions	32 W x 47 L X 60 / 67 H in 81W x 119 L x 152/171 H cm
Weight	472 lbs / 204 kg
Effective Bore Size	25 in / 63.5 cm diameter
Gantry rotation	360 degrees

## power

Line Voltage	~120 V / ~230V
Line Frequency	50-60 Hz
Line Current	5 A standby / 2.5 A standby
Peak Current	20 A max / 10 A max

## acquisition protocols *preferred*

	Frames	Scan Time	3D image viewing
Bone - large FOV	600	20 seconds	22 x 13 cm
Bone - hi-res	600	20 seconds	22 x 8 cm
Tissue - large FOV	600	45 seconds	22 x 13 cm
Tissue - hi-res	600	45 seconds	22 x 8 cm

### *Reconstructed Field-of-View (FOV)*

Large FOV	22 x 22 x 13 cm
High-resolution FOV	22 x 22 x 8 cm

## reconstruction protocols

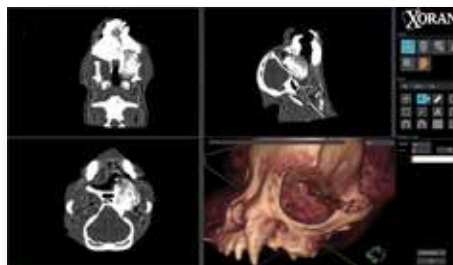
Typical reconstruction	10 - 76 seconds
High-resolution (default)	0.3 mm voxels in 3D
Region of Interest (ROI) <i>(bone acquisition only)</i>	≥ 70 microns

Coronal Slices	548 - 732
Sagittal Slices	548 - 732
Axial Slices	~200 - ~426
Compatibility	DICOM 3.0



SPECIFICATIONS

With VetCAT IQ, you can see disease you might otherwise miss.



Scan image shown:  
Tumor invading the orbital floor



360-degree full motion gantry  
Built-in display for real-time scan analysis



Locking wheels for stability



SPECIFICATIONS