



the imaging solution for your clinic

space

Dimensions 45 W x 29 L X 65 H in
115 W x 74 L x 166 H cm

Weight 495 lbs / 224 kg

Effective Bore Size 31.5 in / 80 cm diameter

Gantry rotation 360 degrees

power

Line Voltage ~120 / 240 V

Line Frequency 50 - 60 Hz

Line Current 5A / 2 A Standby

Peak Current 20 A / 10 A Max

acquisition protocols preferred

	Frames	Scan Time	3D image viewing
Bone - large FOV	600	20 seconds	22 x 13 cm
Tissue - large FOV	600	45 seconds	22 x 13 cm

reconstruction protocols

Typical reconstruction time 10 - 76 seconds

High-resolution (default) 0.3 mm voxels in 3D

Region of Interest (ROI) ≥ 70 microns (bone only)

Coronal Slices 548 - 732

Sagittal Slices 548 - 732

Axial Slices ~320 - ~426

Compatibility DICOM 3.0



VITRON™

SPECIFICATIONS



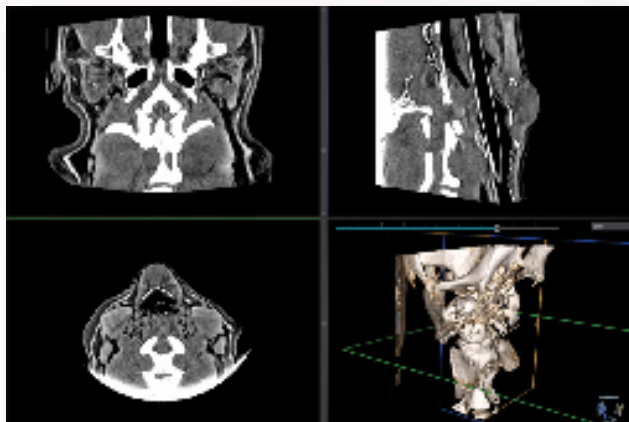
800.709.6726 / xorantech.com



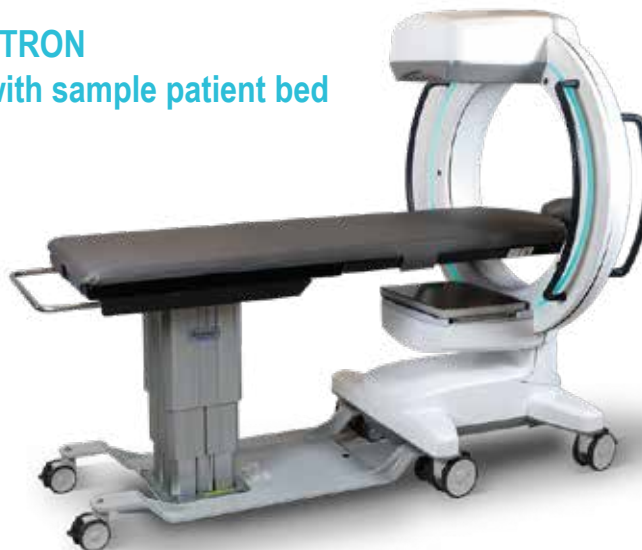
patient positioning



sample scan image



vTRON
with sample patient bed



vTRON™

SPECIFICATIONS